



SystemActive

tel: 01435 860 180

email: online@systemactive.com

TECHNICAL WHITEPAPER

CONTENTS & NAVIGATION

2

HP ZCentral and HP ZCentral 4R
using HP's Windows 10 Pro
Preinstalled image

3-5

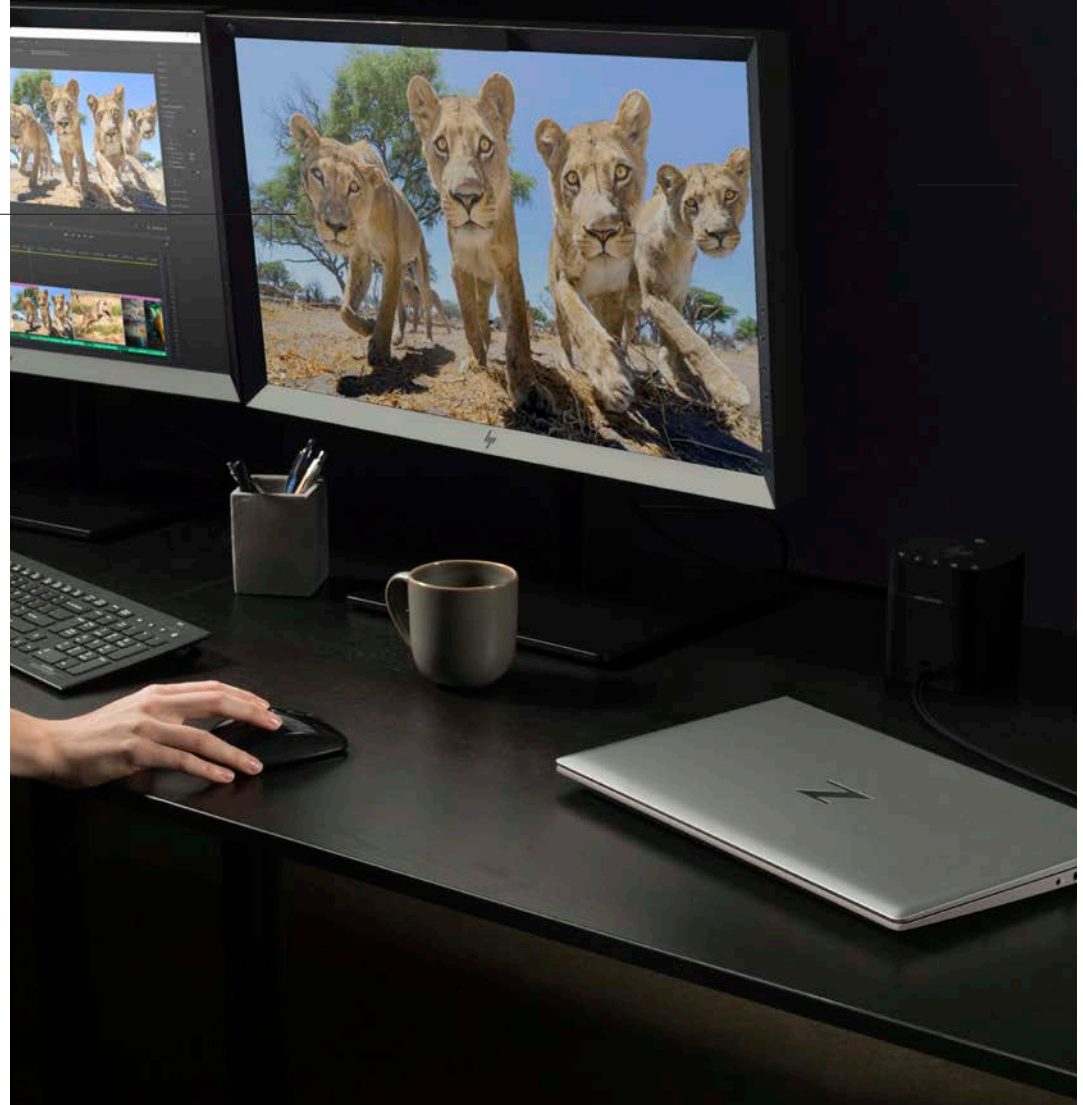
Installing HP ZCentral
Remote Boost

6

Integrating with HP ZCentral
Connect environment

7

Conclusion
Other resources



HP ZCENTRAL AND HP ZCENTRAL 4R USING HP'S WINDOWS 10 PRO PREINSTALLED IMAGE

CONTENTS & NAVIGATION

2

HP ZCentral and HP ZCentral 4R
using HP's Windows 10 Pro
Preinstalled image

3-5

Installing HP ZCentral
Remote Boost

6

Integrating with HP ZCentral
Connect environment

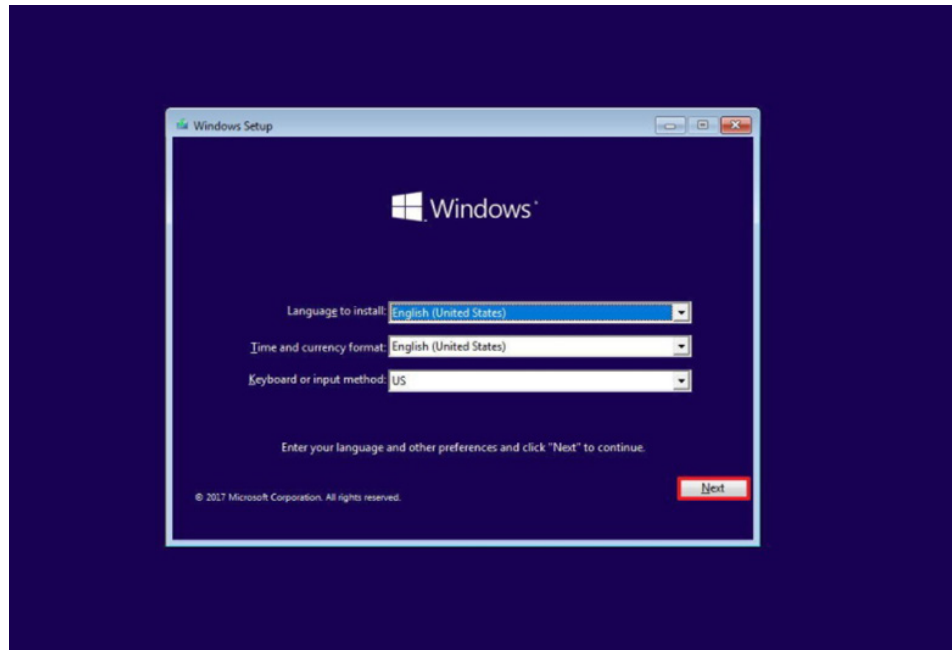
7

Conclusion
Other resources

Once you have received your HP ZCentral 4R you will need to take steps to make the system operational and prepared to use with HP ZCentral Remote Boost or HP ZCentral Connect.

1. ATTACH PERIPHERALS AND SETUP WINDOWS

The preinstalled image will be ready for you to walk through the Microsoft Windows 10 Setup Screens.



To interact with the Windows setup screens you must either connect

- A. A monitor, keyboard, and mouse
- B. A KVM
- C. An IP-KVM

All of these devices will allow you to interact with the system and walk through the setup screens. There will be multiple such screens to walk you through and configure your preferences for Windows. Once complete, you will arrive at the Windows desktop.

Once the desktop has been reached, to use HP ZCentral Remote Boost or HP ZCentral Connect you must either obtain the system hostname or IP Address, or set the hostname and IP Address. This is all dependent on if you are joining a domain, using DHCP, and other possible factors for the network you are joining.

INSTALLING HP ZCENTRAL REMOTE BOOST

CONTENTS & NAVIGATION

2

HP ZCentral and HP ZCentral 4R
using HP's Windows 10 Pro
Preinstalled image

3-5

Installing HP ZCentral
Remote Boost

6

Integrating with HP ZCentral
Connect environment

7

Conclusion
Other resources

HP ZCentral Remote Boost enables users to access the high-performance workstations capabilities of the HP ZCentral 4R from anywhere. The Remote Boost software is comprised of two main components, the Sender portion installed on the computing host is free to use on HP Z workstations. The Receiver portion installs on the end-point systems and is free on all platforms. For additional details refer to the [HP ZCentral Remote Boost 2020 QuickSpecs](#).

The HP ZCentral Remote Boost Sender software will need to be installed on the HP ZCentral 4R. Please see the HP ZCentral Remote Boost User Guide for instructions on how to install and configure the HP ZCentral Remote Boost Sender software.

2. (OPTIONAL) REMOVING THE I/O DEVICES AND CONFIGURING FOR HEADLESS

You can use your HP ZCentral 4R in a “headless” configuration using ZHP ZCentral Remote Boost. Quadro only. Headless simply means that no monitor is connected to the system. To set up your system to be headless, the following steps will need to be performed:

- Using the HP ZCentral Remote Boost Receiver software on a separate system, confirm that a connection can be made to the HP ZCentral Remote Boost Sender on the HP ZCentral 4R. This will require knowing the hostname or IP address of the HP ZCentral 4R along with the credentials for a user account on the HP ZCentral 4R.
- See the Starting, an HP ZCentral Remote Boost session section in the HP ZCentral Remote Boost User Guide for further information.
- If the HP ZCentral 4R will not have a physical mouse plugged in, HP ZCentral Remote Boost requires a virtual mouse to be installed. To install the virtual mouse, please run the VMouseSetup.exe file included in the HP ZCentral Remote Boost software download.
- Prepare the system for ‘headless’ display operation. Export the EDID of the currently attached display using the NVIDIA® Control Panel. This can be achieved by right clicking on the desktop and selecting NVIDIA®.

CONTENTS & NAVIGATION

HP ZCentral and HP ZCentral 4R
using HP's Windows 10 Pro
Preinstalled image

3-5

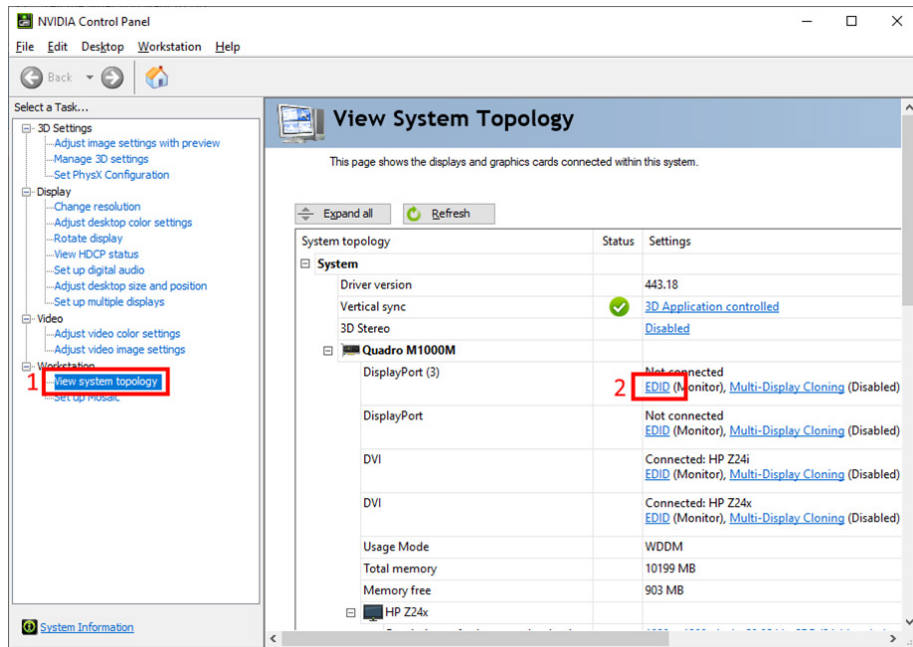
Installing HP ZCentral
Remote Boost

6

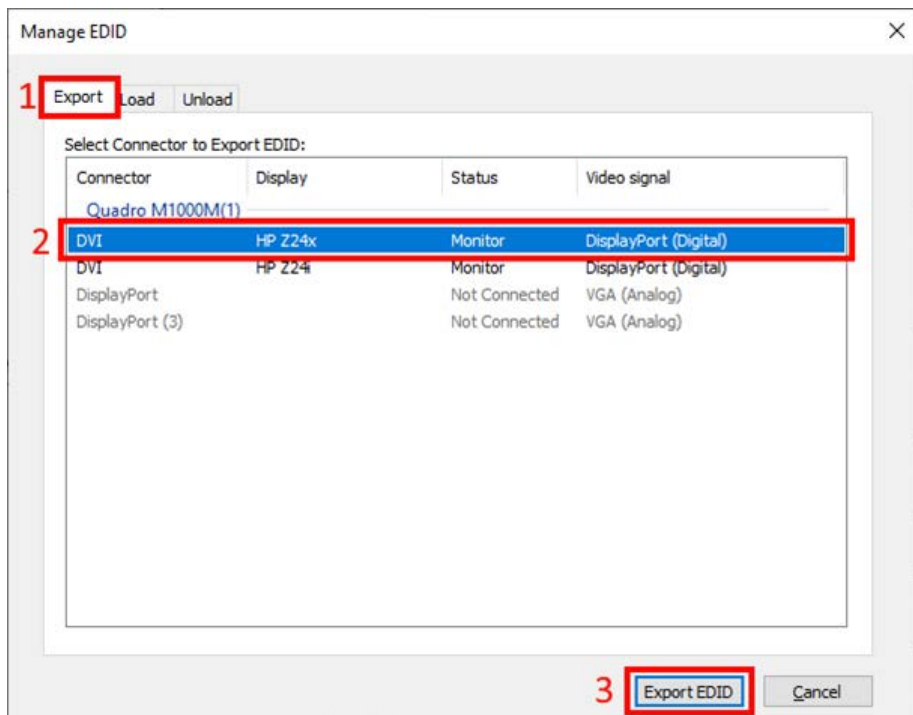
Integrating with HP ZCentral
Connect environment

7

Conclusion
Other resources



Control Panel. Click on **View system topology** and then **EDID** as shown below.



CONTENTS & NAVIGATION

2

HP ZCentral and HP ZCentral 4R
using HP's Windows 10 Pro
Preinstalled image

3-5

Installing HP ZCentral
Remote Boost

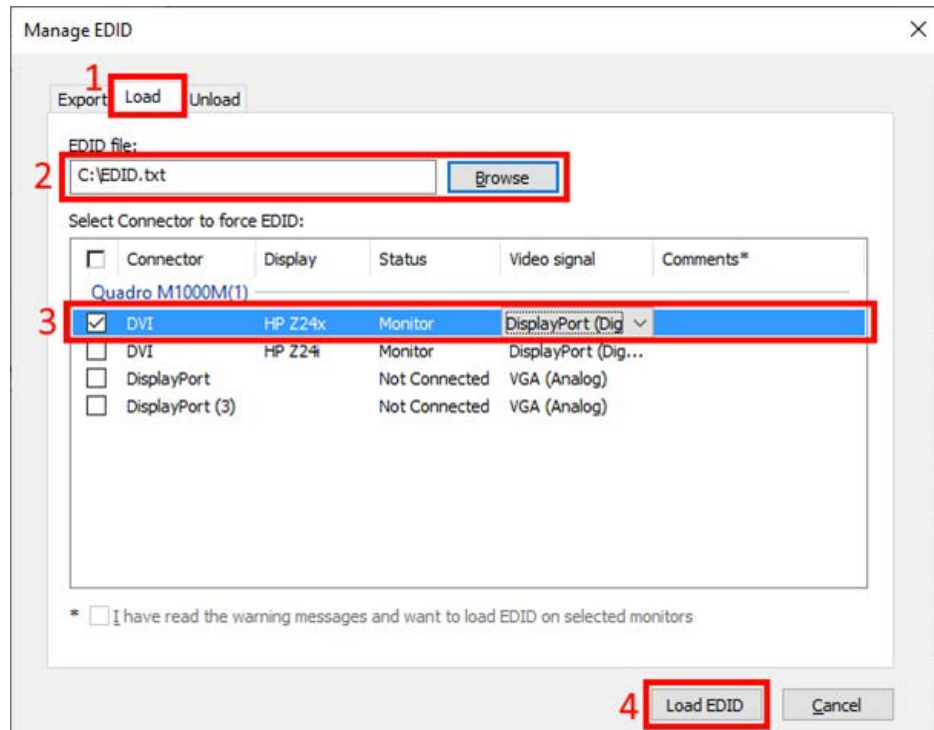
6

Integrating with HP ZCentral
Connect environment

7

Conclusion
Other resources

Then under the **Export** tab, select the physical display to export before clicking **Export EDID**. You will then be prompted to save the EDID file.



After successfully exporting the EDID, switch to the **Load** tab and browse to the EDID file you just saved. Select the same display you exported the EDID from and then click **Load EDID**. You may have to click the warning box to allow the EDID load to succeed.

This only needs to be performed for one display. If you wish to have more displays available during an HP ZCentral Remote Boost session, please see the *Display resolution and layout matching* section in the HP ZCentral Remote Boost User Guide for information on how to use Remote Boost to control this behavior.

- Now you can disconnect any display, keyboard, and mouse from the HP ZCentral 4R.
- Note that a physical display should be connected into the same DP where it was first exported.

INTEGRATING WITH HP ZCENTRAL CONNECT ENVIRONMENT

CONTENTS & NAVIGATION

2

HP ZCentral and HP ZCentral 4R
using HP's Windows 10 Pro
Preinstalled image

3-5

Installing HP ZCentral
Remote Boost

6

Integrating with HP ZCentral
Connect environment

7

Conclusion
Other resources

HP ZCentral Connect allows the IT administrator to manage connections between remote users and centralized computing hosts. Assign individual machines or create pools for groups to share. All from a single console. The HP ZCentral Connect solutions is comprised of four main components: Manager, Agent, Hardware Monitor, and Client.

A. Installing HP ZCentral Connect Agent

The ZCentral Connect Agent is required for most manageability features provided by the Manager. To provide the highest possible security, the Agent must register with the Manager. On a Windows OS this is done during the installation process. Each Agent must register using the unique hostname used in the Manager. In addition, a one-time use authorization code generated by the manager must be used for the registration of each Agent. The installation and registration processes are described in detail in the Agent Deployment Guide. The guide is found in the documentation package of the HP ZCentral Manager or through the admin UI's help page.

There are example scripts provided by HP to assist in the registration process of multiple Agents. These example scripts are available through the Agent Deployment Guide on the admin UI of the Manager. There are Python and PowerShell scripts for both local and remote installation as well as registration of Agents. The Agent Deployment Guide describes the contents of the example python scripts so that new scripts can be written for different environments.

B. Installing HP ZCentral Connect Hardware Monitor

The HP ZCentral Connect Hardware Monitor is available in the Connect Agent package but can be installed separately if needed. The Hardware Monitor installation process does not require any registration or configuration steps. The install script that is part of the Agent package will automatically detect that HP ZCentral 4R units are supported by the Hardware Monitor and run the MSI.

More information about the Hardware Monitor and the installation process can be found in the Hardware Monitor Guide found in the documentation package of the HP ZCentral Connect Manager or through the admin UI's help page.

1. PROVISION INTEL® AMT

Intel® AMT provides an out of band channel for management. If using HP ZCentral 4R units in an HP ZCentral Connect environment, Intel® AMT needs to be provisioned for full functionality. The Integrating with Intel® AMT section of the HP ZCentral Connect User Guide contains information about manually provisioning AMT for use within an HP ZCentral Connect environment.

CONTENTS & NAVIGATION

2

HP ZCentral and HP ZCentral 4R
using HP's Windows 10 Pro
Preinstalled image

3-5

Installing HP ZCentral
Remote Boost

6

Integrating with HP ZCentral
Connect environment

7

Conclusion
Other resources

CONCLUSION

Now your HP ZCentral 4R should be ready for use with HP ZCentral Remote Boost.

LET US HELP YOU CREATE AMAZING BUSINESS
SOLUTIONS TODAY

LEARN MORE

© Copyright 2020 HP Development Company, L.P. The information contained herein is subject to change without notice. The only warranties for HP products and services are set forth in the express warranty statements accompanying such products and services. Nothing herein should be construed as constituting an additional warranty. HP shall not be liable for technical or editorial errors or omissions contained herein.

Intel, the Intel logo, Core and Xeon are trademarks or registered trademarks of Intel Corporation or its subsidiaries in the United States and other countries. Microsoft and Windows are either registered trademarks or trademarks of Microsoft Corporation in the United States and/or other countries. AMD and Radeon are trademarks of Advanced Micro Devices, Inc. NVIDIA and Quadro are trademarks and/or registered trademarks of NVIDIA Corporation in the U.S. and other countries. Red Hat Enterprise Linux Desktop is a trademark of Red Hat, Inc. in the United States and other countries. Linux® is the registered trademark of Linus Torvalds in the U.S. and other countries. Bluetooth is a trademark of its proprietor and used by HP Inc. under license. USB Type-C™ and USB-C™ are trademarks of USB Implementers Forum. DisplayPort™ and the DisplayPort™ logo are trademarks owned by the Video Electronics Standards Association (VESA®) in the United States and other countries. ENERGY STAR is a registered trademark of the U.S. Environmental Protection Agency. All other trademarks are the property of their respective owners.

4AA7-8727ENW, October 2020

